

## 25 Watt Illuminator

The Cold Beam 25 Illuminator was created to provide a powerful alternative for lighting applications where low voltage and maximum light output are required. The Cold Beam 25 is engineered so that minimal heat enters the fiber, putting an end to melting problems often encountered with PMMA fiber. Producing more than 1000 lm in natural white (5600K), there is simply no other illuminator on the market that can compete in value and performance!

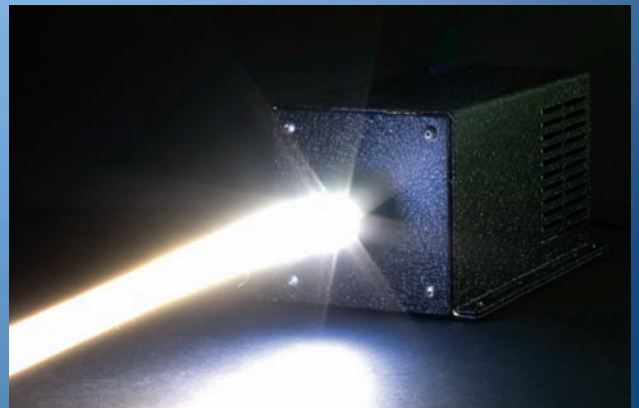
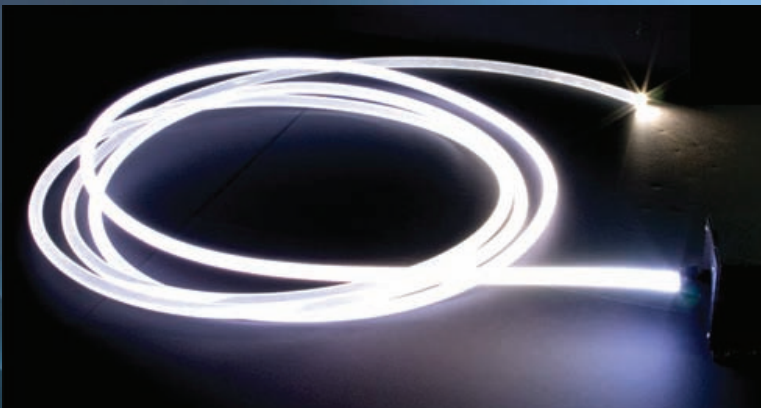


### ***Applications include:***

- Ambient and down light using end light fiber
- Architectural Lighting Applications: Light more than 50 ft of solid core fiber illuminate up to 100 ft by pumping the fiber from 2 sides.
- Under Cabinet Lighting for residential and commercial uses
- Neon replacement

### ***Features***

- Low energy consumption
- Long lamp life; up to 50,000+ hours
- Instant on/off
- Dimmable
- Minimal heat enters the fiber



# Data Sheet

## Cold Beam 25

### Electrical Specs

Voltage	24-36 VDC
Current	1 A (typ)
Power	25 W

### Optical Specs (all white options shown)

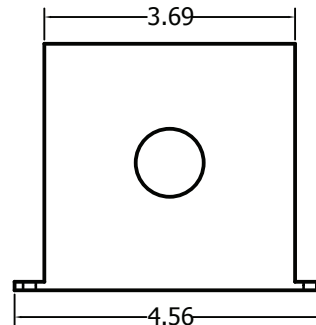
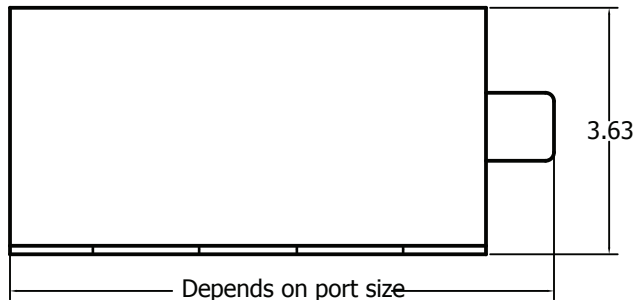
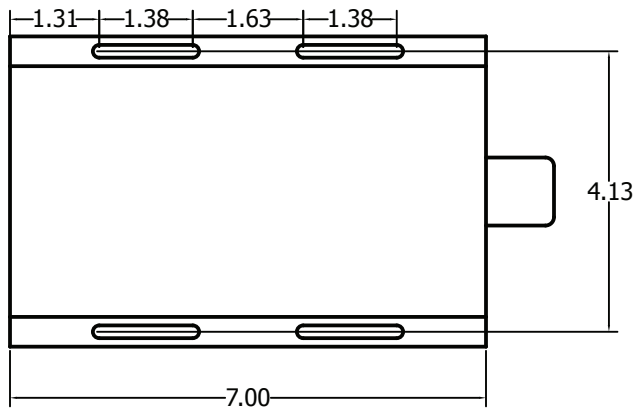
CCT	Lumens
2700K	600
3000K	700
3500K	700
4000K	800
4500K	800
5600K	900
5700K	1100
6500K	1100
8000K	1100

### Misc

Weight	2 bs
Output Port	1/2 , 3/4 , or 1" , others available by request
Storage Temp	-20 to +85 deg C
Operating Temp	-10 to +45 deg C
Warranty	2 years

### Options

Dimming	DMX and Analog dimming available
Colors	See Optical Specs, others available by special request
Port Sizes	Please Inquire



all dimensions shown in inches