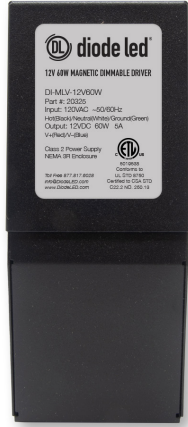


## Dimmable LED driver for everyday projects

- Compatible with many dimmers, on/off switches, and most LED tape light and puck lights
- 5-year warranty
- Magnetic dimmable driver (MLV)
- Ships same-day from our regional distribution centers
- Recommended with Diode LED tape light

## Technical Information:

- Driver should be loaded to 80% maximum (i.e. 80w for 100w model)
- Minimum load:
  - 20% for full-range dimming
  - 60% for On/Off switching
- Constant voltage output
- Suitable for indoor & outdoor locations



## Recommended Dimmers

(For use with dimmers not listed here, please call Customer Service at 877-817.6028)

NAME	MODEL
Lutron Diva	DVLV-600P
Lutron Homeworks	HWD 6ND WH
Lutron Homeworks QS	HQRD 6ND
Lutron Maestro	MAELV-600
Lutron Maestro	MRF2-6ND-120
Lutron Radio RA2	RRD-10ND
Lutron Radio RA2	RRD 6CL WH
Lutron Verti	VT-1000MN
Legrand Harmony Tru-Universal	H703PTU
Leviton Sureslide	6674-P

Note: MLVs are not for use with VALENT X, ALPHATECH X, or GRAZE X light fixtures.

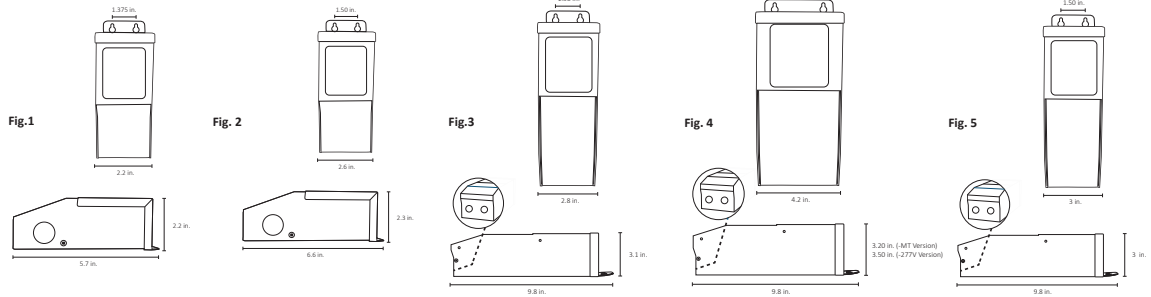
## Specifications

SKU	Input	Wattage	Dimensions
<b>12V</b>			
DI-MLV-12V20W	120VAC	20W	2.2 x 2.2 x 5.7 inches
DI-MLV-12V40W	120VAC	40W	2.2 x 2.2 x 5.7 inches
DI-MLV-12V60W	120VAC	60W	2.6 x 2.3 x 6.6 inches
DI-MLV-12V100W	120VAC	100W	2.8 x 3.1 x 9.9 inches
DI-MLV-12V150W	120VAC	150W	2.8 x 3.1 x 9.8 inches
DI-MLV-12V200W	120VAC	200W	3 x 3 x 9.8 inches
DI-MLV-12V300W	120VAC	300W	4.2 x 3.5 x 9.8 inches
DI-MLV-12V120W-MT	120VAC	120W MULTITAP 2X60W	3 x 3 x 9.8 inches
DI-MLV-12V180W-MT	120VAC	180W MULTITAP 3X60W	3 x 3 x 9.8 inches
DI-MLV-12V300W-MT	120VAC	300W MULTITAP 5X60W	4.2 x 3.5 x 9.8 inches
DI-MLV-12V20W-277	277VAC	20W	2.2 x 2.2 x 5.7 inches
DI-MLV-12V60W-277	277VAC	60W	2.6 x 2.3 x 6.6 inches
DI-MLV-12V100W-277	277VAC	100W	3 x 3 x 9.8 inches
DI-MLV-12V200W-277	277VAC	200W	4.2 x 3.5 x 9.8 inches
DI-MLV-12V300W-277	277VAC	300W	4.2 x 3.5 x 9.8 inches
<b>24V</b>			
DI-MLV-24V20W	120VAC	20W	2.2 x 2.2 x 5.7 inches
DI-MLV-24V40W	120VAC	40W	2.2 x 2.2 x 5.7 inches
DI-MLV-24V60W	120VAC	60W	2.6 x 2.3 x 6.6 inches
DI-MLV-24V96W	120VAC	96W	2.6 x 2.3 x 6.6 inches
DI-MLV-24V150W	120VAC	150W	2.8 x 3.1 x 9.8 inches
DI-MLV-24V200W	120VAC	200W	3 x 3 x 9.8 inches
DI-MLV-24V300W	120VAC	300W	4.2 x 3.5 x 9.8 inches
DI-MLV-24V192W-MT	120VAC	192W MULTITAP 2X96W	4.2 x 3.2 x 9.8 inches
DI-MLV-24V288W-MT	120VAC	288W MULTITAP 3X96W	4.2 x 3.2 x 9.8 inches
DI-MLV-24V20W-277	277VAC	20W	2.2 x 2.2 x 5.7 inches
DI-MLV-24V40W-277	277VAC	40W	2.2 x 2.2 x 5.7 inches
DI-MLV-24V96W-277	277VAC	96W	3 x 3 x 9.8 inches
DI-MLV-24V200W-277	277VAC	200W	4.2 x 3.5 x 9.8 inches
DI-MLV-24V300W-277	277VAC	300W	4.2 x 3.5 x 9.8 inches

# DI-MLV MAGNETIC LED DRIVER (DIMMABLE)

## Mechanical Diagrams

Figure 1	Figure 2	Figure 3
DI-MLV-12V20W DI-MLV-12V20W-277 DI-MLV-24V20W-277 DI-MLV-24V40W-277	DI-MLV-12V60W DI-MLV-12V60W-277 DI-MLV-24V20W DI-MLV-24V60W DI-MLV-24V96W	DI-MLV-12V100W DI-MLV-12V150W DI-MLV-24V150W
Figure 4	Figure 5	
DI-MLV-12V300W DI-MLV-12V300W-MT DI-MLV-12V200W-277 DI-MLV-12V300W-277 DI-MLV-24V300W DI-MLV-24V192W-MT DI-MLV-24V288W-MT DI-MLV-24V200W-277 DI-MLV-24V300W-277	DI-MLV-12V200W DI-MLV-12V120W-MT DI-MLV-12V180W-MT DI-MLV-12V100W-277 DI-MLV-24V200W DI-MLV-24V96W-277	



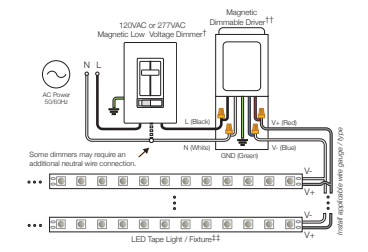
## System Diagrams

The following diagrams are provided as example system designs. Install in accordance with national and local electrical code regulations.

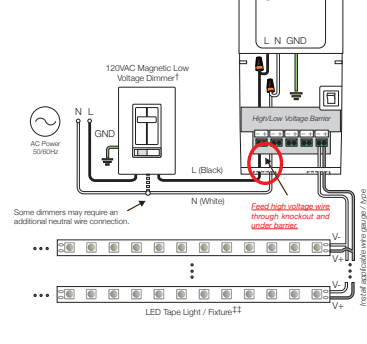
### DIAGRAM KEY

L = Line (Black). (Orange for 277VAC models)  
 B = Line Boost Tap (Orange)  
 N = Neutral (White)  
 GND = Ground (Green)  
 V+ = Low Voltage Positive (Red)  
 V- = Low Voltage Negative (Blue)

### STANDARD DIMMER/DRIVER DIAGRAM

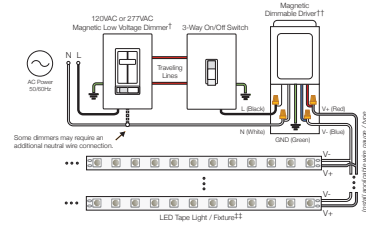


### MULTI-TAP DRIVER DIAGRAM



### 3-WAY DIMMER/DRIVER DIAGRAM

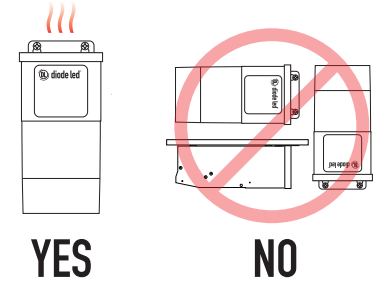
Also applies to Multi-Tap Models.



† Install a compatible magnetic low voltage dimmer switch. See dimmer switch manufacturer installation guide for complete wiring instructions.  
 †† See fixture specifications for maximum series run limits.

### MOUNTING

For proper heat dissipation, mount vertically to a sturdy surface with mounting tab at top and wiring compartment at bottom. For wet location installations, ensure to mount driver vertically in a location where water cannot pool or collect. When mounting multiple drivers, allow a minimum of 5 in. between drivers.



## ADDITIONAL RESOURCES

[MAGNETIC DIMMABLE DRIVER Installation Guide](#)  
[MAGNETIC DIMMABLE DRIVER Compatibility List](#)

## SAFETY / WARNINGS / DISCLOSURES

1. Install in accordance with national and local electrical code regulations.
2. This product is intended to be installed and serviced by a qualified, licensed electrician.
3. Only install with a Class 2 DC Constant Voltage LED driver.
4. Only use copper wiring. Use wires rated for at least 176°F (80°C) and certified for use with external connection of electrical equipment.
5. Each maximum run requires a dedicated power feed from the driver. Do not extend beyond the recommended maximum run length.
6. Tape light, attached wire leads, and additional extension cables, connectors, etc., are not rated for in-wall installation unless otherwise noted. Tape light and attached wire leads are field-cuttable.
7. Ensure applicable wire is installed between driver, fixture, and any controls in-between. When choosing wire, factor in voltage drop, amperage rating, and type (in-wall rated, wet location rated, etc.). Inadequate wire installation could overheat wires, and cause fire.
8. Do not install in environment where LED chips are exposed to direct sunlight as damage to the phosphor will occur.
9. Do not install in environment where excessive heat may exist (ex. close proximity to fireplace, etc.) See Ambient Temperature ratings
10. Do not install indoor LED tape light products in outdoor / wet location environments. Only wet location tape light models are rated for outdoor / wet locations.
11. Do not modify product beyond instructions or warranty will be void.
12. Tape light must be handled with care. Excessive handling, bending, and pressure may damage the product, voiding the warranty.
13. Actual color may vary from what is pictured on this sheet and other print materials due to the limitations of photographic processes.
14. We reserve the right to modify and improve the design of our fixtures without prior notice. We cannot guarantee to match existing installed fixtures for subsequent orders or replacements in regards to product appearance, CCT, or lumen output.

## WARRANTY

### Limited Warranty

This product has a five (5) year limited warranty from the date of shipment. This warranty does not include the additional accessories referenced in this specification sheet. Complete warranty details for fixtures and additional accessories are available at [www.diodeled.com/limited-warranty/](http://www.diodeled.com/limited-warranty/) within the Policies section. For warranty related questions please contact product support.

### Consumer's Acknowledgment

Elemental LED, Inc. stands behind its products when they are used properly and according to our specifications. By purchasing our products, the purchaser agrees and acknowledges that lighting design, configuration and installation is a complex process, wherein seemingly minor factors or changes in layout and in-field adjustments can have a significant impact on an entire system. Choosing the correct components is essential. Elemental LED is able to work with the original purchaser to make an appropriate product selection to the extent of the limited information that the customer can provide, but it is virtually impossible for Elemental LED to design a system that foresees every unknown factor. For this reason, this Warranty does not cover problems caused by improper design, configuration or installation issues. Any statement from a Elemental LED employee or agent regarding a customer's bill of goods and/or purchase order is NOT an acknowledgment

that the products purchased are designed and configured correctly. The purchase agrees and acknowledges that it is the customer's responsibility to adhere strictly to all information contained in the Product Specification Sheets.

There is often more than one way to design, configure and layout an LED lighting application properly to achieve the same lighting effect. Elemental LED strongly recommends that licensed professionals be used in the design and installation of lighting systems that include Elemental LED products. The specifications include important information that a designer and installer should carefully review and strictly follow. Qualified designers and certified and/or licensed installers, with access to the final installation environment, customer goals, and Elemental LED product specifications can make the requisite decisions appropriate for a successful finished lighting application.