

# itl boulder

THE LIGHT CENTER OF THE INDUSTRY SINCE 1955

INDEPENDENT TESTING LABORATORIES, INC.  
3386 LONGHORN ROAD, BOULDER, CO 80302 USA

PHONE: (303)442-1255 • FAX: (303)449-5274 • E-MAIL: itl@itlboulder.com • WEBSITE: www.itlboulder.com

REPORT NUMBER: ITL59285

DATE: 09/29/07

PREPARED FOR: AMERICAN LIGHTING, LLC

CATALOG NUMBER: LR-LED-CW-3

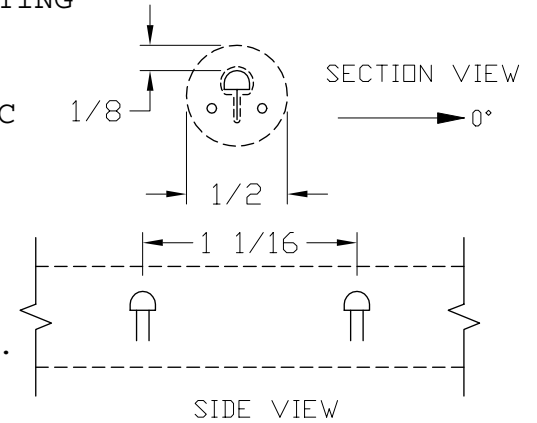
LUMINAIRE: ONE 36" LED "LIGHT ROPE" CONTAINING 36 LEDS ENCASED IN A CLEAR TUBULAR FLEXIBLE PVC HOUSING.

LAMPS: THIRTY-SIX .064-WATT WHITE LIGHT EMITTING DIODES (LEDS), VERTICAL BASE-DOWN POSITION.

TOTAL INPUT WATTS= 2.9 AT 120.0 VOLTS

LED DRIVER: UNKNOWN MANUFACTURER INLINE AC/DC CONVERTER

NOTE: DATA SHOWN IS ABSOLUTE FOR THE SAMPLE PROVIDED AT RATED INPUT VOLTAGE (120VAC) TO THE INLINE CONVERTER. A 45" POWER CORD EXTENDS FROM THE INLINE CONVERTER TO THE LED ASSEMBLY. LAMP INFORMATION PROVIDED BY CLIENT. THIS "LIGHT ROPE" WAS TESTED AIMED AT NADIR. THE DATA WAS THEN TILTED 180-DEGREES TO REPRESENT LUMINAIRE AIMED TOWARDS ZENITH.

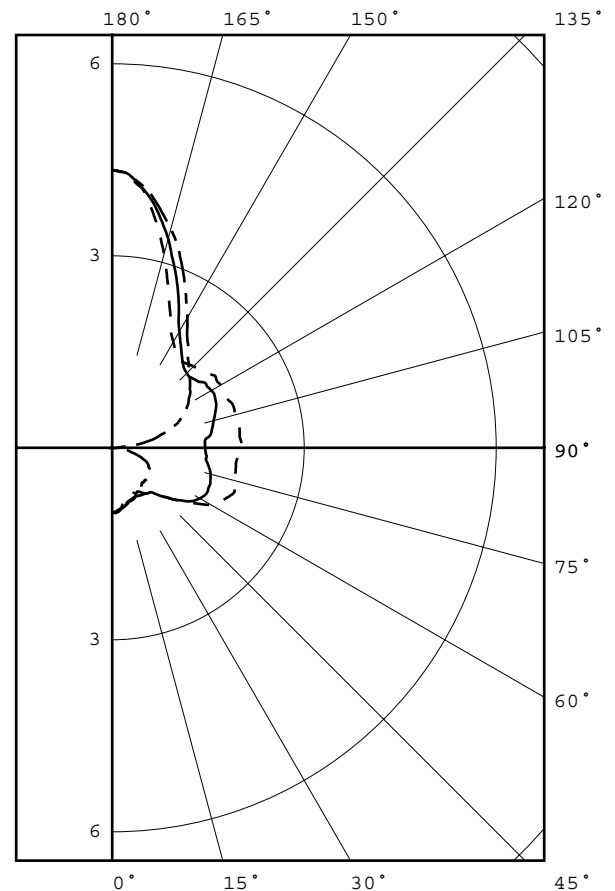


### CANDELA DISTRIBUTION

	0.0	22.5	45.0	67.5	90.0
0	1.0	1.0	1.0	1.0	1.0
5	1.0	1.0	1.0	1.0	1.0
15	0.9	0.8	0.9	0.9	0.9
25	0.8	0.8	0.8	0.8	0.8
35	0.9	0.9	0.9	0.8	0.8
45	1.1	1.1	1.1	0.9	0.7
55	1.5	1.5	1.5	1.0	0.7
65	1.9	1.9	1.6	0.9	0.6
75	2.0	1.9	1.6	0.8	0.4
85	2.0	1.9	1.5	0.8	0.1
90	2.0	1.9	1.4	0.8	0.1
95	2.0	1.8	1.5	0.9	0.2
105	2.0	1.8	1.6	1.3	0.8
115	1.9	1.8	1.8	1.5	1.2
125	2.0	1.9	1.8	1.6	1.5
135	1.8	1.7	1.6	1.7	1.7
145	1.7	1.8	1.9	2.0	2.0
155	2.2	2.2	2.5	2.7	2.7
165	3.1	3.2	3.4	3.5	3.5
175	4.2	4.2	4.2	4.2	4.2
180	4.3	4.3	4.3	4.3	4.3

### FLUX

0.0
0.0
0.0
0.0
1.0
1.0
1.0
1.0
1.0
1.0
1.0
1.0
1.0
2.0
2.0
2.0
1.0
1.0
1.0
1.0
1.0
0.0



#### LEGEND:

0-deg: - - - - -  
45-deg: - - - - -  
90-deg: - - - - -

### ZONAL LUMEN SUMMARY

ZONE	LUMENS	%FIXT
0- 30	0.7	3.9
0- 40	1.3	6.7
0- 60	3.2	16.9
0- 90	7.4	39.7
90-120	4.8	25.5
90-130	6.3	33.7
90-150	8.8	47.1
90-180	11.3	60.3
0-180	18.7	100.0

CIE TYPE - SEMI-INDIRECT

Checked ..... *B.HYRE* .....

Approved ..... *R.BEATTIE* .....



INDEPENDENT TESTING LABORATORIES, INC.  
 3386 LONGHORN ROAD, BOULDER, CO 80302 USA

PHONE: (303)442-1255 • FAX: (303)449-5274 • E-MAIL: itl@itlboulder.com • WEBSITE: www.itlboulder.com

REPORT NUMBER: ITL59285  
 PREPARED FOR: AMERICAN LIGHTING, LLC

DATE: 09/29/07

CANDELA DISTRIBUTION

	0.0	22.5	45.0	67.5	90.0	ZONAL LUMEN SUMMARY
0.0	1.0	1.0	1.0	1.0	1.0	0- 5 0.
5.0	1.0	1.0	1.0	1.0	1.0	5- 10 0.
10.0	0.9	0.9	0.9	0.9	0.9	10- 15 0.
15.0	0.9	0.8	0.9	0.9	0.9	15- 20 0.
20.0	0.8	0.8	0.9	0.9	0.9	20- 25 0.
25.0	0.8	0.8	0.8	0.8	0.8	25- 30 0.
30.0	0.8	0.8	0.9	0.8	0.8	30- 35 0.
35.0	0.9	0.9	0.9	0.8	0.8	35- 40 0.
40.0	1.0	0.9	0.9	0.8	0.7	40- 45 0.
45.0	1.1	1.1	1.1	0.9	0.7	45- 50 0.
50.0	1.3	1.3	1.3	0.9	0.7	50- 55 1.
55.0	1.5	1.5	1.5	1.0	0.7	55- 60 1.
60.0	1.8	1.8	1.6	1.0	0.7	60- 65 1.
65.0	1.9	1.9	1.6	0.9	0.6	65- 70 1.
70.0	2.0	1.9	1.6	0.8	0.5	70- 75 1.
75.0	2.0	1.9	1.6	0.8	0.4	75- 80 1.
80.0	2.0	1.8	1.5	0.8	0.3	80- 85 1.
85.0	2.0	1.9	1.5	0.8	0.1	85- 90 1.
90.0	2.0	1.9	1.4	0.8	0.1	90- 95 1.
95.0	2.0	1.8	1.5	0.9	0.2	95-100 1.
100.0	2.0	1.8	1.6	1.1	0.6	100-105 1.
105.0	2.0	1.8	1.6	1.3	0.8	105-110 1.
110.0	2.0	1.8	1.7	1.4	1.1	110-115 1.
115.0	1.9	1.8	1.8	1.5	1.2	115-120 1.
120.0	2.0	1.9	1.8	1.5	1.4	120-125 1.
125.0	2.0	1.9	1.8	1.6	1.5	125-130 1.
130.0	1.9	1.8	1.7	1.6	1.6	130-135 1.
135.0	1.8	1.7	1.6	1.7	1.7	135-140 1.
140.0	1.7	1.7	1.7	1.8	1.8	140-145 1.
145.0	1.7	1.8	1.9	2.0	2.0	145-150 1.
150.0	1.9	2.0	2.1	2.3	2.3	150-155 1.
155.0	2.2	2.2	2.5	2.7	2.7	155-160 1.
160.0	2.6	2.7	2.9	3.1	3.1	160-165 1.
165.0	3.1	3.2	3.4	3.5	3.5	165-170 0.
170.0	3.7	3.8	3.8	3.9	3.9	170-175 0.
175.0	4.2	4.2	4.2	4.2	4.2	175-180 0.
180.0	4.3	4.3	4.3	4.3	4.3	



INDEPENDENT TESTING LABORATORIES, INC.  
 3386 LONGHORN ROAD, BOULDER, CO 80302 USA

PHONE: (303)442-1255 • FAX: (303)449-5274 • E-MAIL: itl@itlboulder.com • WEBSITE: www.itlboulder.com

REPORT NUMBER: ITL59285

DATE: 09/29/07

PREPARED FOR: AMERICAN LIGHTING, LLC

COEFFICIENTS OF UTILIZATION - ZONAL CAVITY METHOD

EFFECTIVE FLOOR CAVITY REFLECTANCE 0.20

RC RW	80				70				50			30			10			0
	70	50	30	10	70	50	30	10	50	30	10	50	30	10	50	30	10	0
0	94	94	94	94	85	85	85	85	68	68	68	53	53	53	39	39	39	32
1	83	78	74	70	75	70	66	63	56	53	50	42	40	38	30	28	27	21
2	74	66	60	54	67	60	54	49	47	43	39	35	32	30	24	22	21	15
3	67	57	50	44	60	51	45	39	40	35	31	30	27	24	21	18	16	12
4	61	50	42	36	54	45	38	32	35	30	26	26	22	19	18	15	13	9
5	55	44	36	30	49	39	32	27	31	25	21	23	19	16	15	13	10	7
6	50	39	31	25	45	35	28	23	27	22	18	20	16	13	14	11	9	6
7	46	34	27	21	41	31	24	19	24	19	15	18	14	11	12	9	7	4
8	43	31	23	18	38	28	21	16	22	17	13	16	12	9	11	8	6	4
9	39	28	21	16	35	25	19	14	20	15	11	15	11	8	10	7	5	3
10	37	25	18	14	33	23	16	12	18	13	10	13	10	7	9	6	4	2

ALL CANDELA, LUMENS, LUMINANCE, COEFFICIENT OF UTILIZATION AND VCP VALUES IN THIS REPORT ARE BASED ON ABSOLUTE PHOTOMETRY.