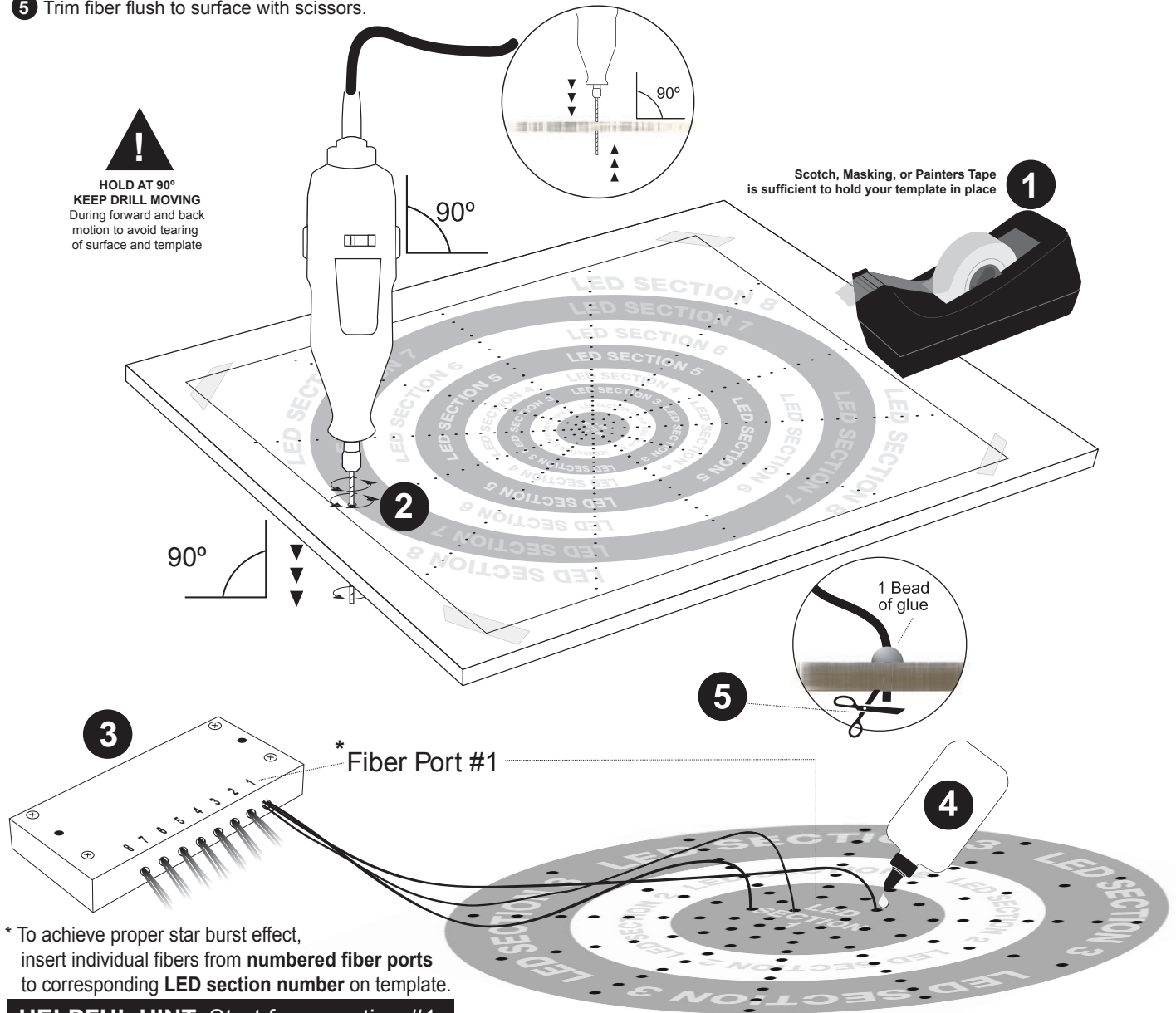


- 1 Unroll Template and tape to your surface.
- 2 Use Dremel® (recommended) and bits provided to drill holes into designated dots on template. When all holes have been drilled, remove template.
- 3 Start inserting your fibers **STARTING WITH LED SECTION 1**. Take fibers from **FIBER PORT 1*** and work your way from the center holes out. The number of holes in each LED section on the template will correspond to the number of fibers from the modules LED port. There are 32 fibers per port and 32 holes per section. Use template reference on the back of this sheet as a guide. Don't worry if you're not exact to the template. As long you work from the inside out, and match the correct numbered LED fiber port to the corresponding LED sections on the template your effects will look great!
- 4 Glue fibers into place and allow to set. (Use glue provided in kit. DO NOT USE Super Glue or stronger bonding agents as they may degrade fibers)
- 5 Trim fiber flush to surface with scissors.



* To achieve proper star burst effect, insert individual fibers from **numbered fiber ports** to corresponding **LED section number** on template.

HELPFUL HINT: Start from section #1 and work your way out.

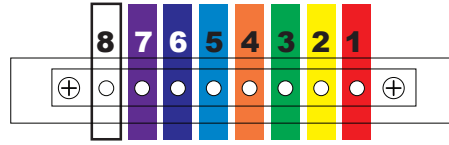
Wiedamark

To achieve proper **Star Burst Effect**, insert fibers accordingly.

Take fibers from **PORT ONE** on your module and insert them into **SECTION ONE** of the template. The number of holes in each LED section on the template will correspond to the number of fibers from the module LED port. There are 32 fibers per port and 32 holes per section.

Work from the inside out until all 8 sections are filled.

Don't worry if you're not exact to the template, as long you work from the inside out, and match fiber port to sections, your effects will look great!



256 TOTAL FIBER POINTS
32 FIBERS PER PORT
32 POINTS PER SECTION

