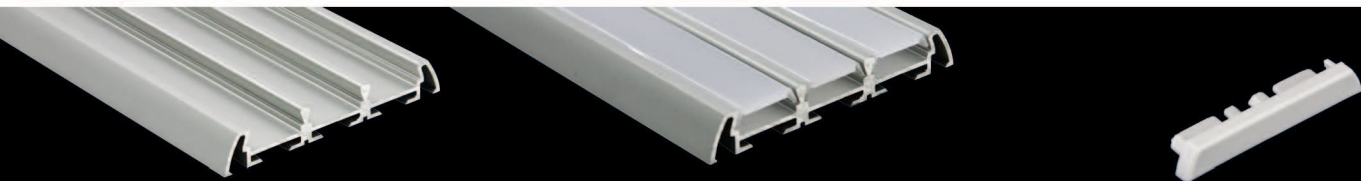




Triple Stant Extrusion

Surface Mount • IP65 Capable

The Triple Stant Extrusion requires an ample clearance of 2-3/8" width and 3/8" height for installation. The sloped shoulders arch more quickly to the mounting surface than the Single Stant, but still form a finished, tailored look. Use for applications where lots of light is needed, such as under cabinet and work counters. Three frosted polycarbonate lenses will conceal 1-3 rows of LED FreeForm, providing UV protection. End caps made of durable polypropylene finish the look. Standard assembly listed offers IP20 protection; Use a neutral cure silicone sealant at each end and along each side of lens for IP65 rating. *Mounting suggestions: Secure using construction adhesive, 3M® double-sided adhesive tape, or flat-head, counter-sunk screws in holes drilled through extrusion. See pages 28-31 for installation tips and suggestions.*



PE-3STANT-1M

39.4" length, Anodized
Aluminum Extrusion

PE-UVSTANT-1M

Frosted PC* UV Lens
(shown in extrusion)

PE-3STANT-END

7/32" White PP* End Cap

Lenses and Caps Sold Separately
Each end cap adds 7/32" to
overall finished length

*PC = Polycarbonate

*PP = Polypropylene