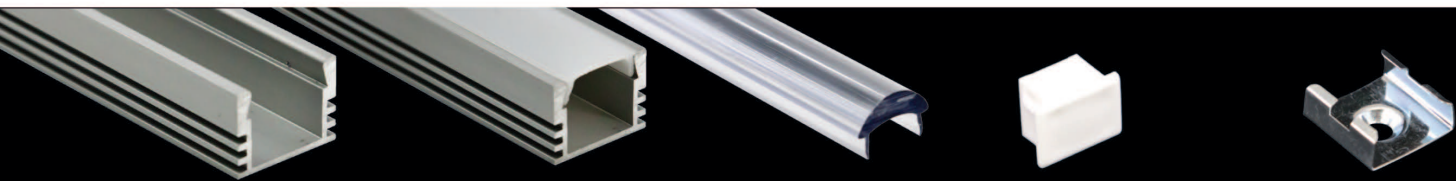




Universal Extrusion

Surface or Recessed Mount • IP65 Capable

The rectangular profile of the Universal Extrusion requires a 5/8" wide channel at 1/2" depth for recessed applications such as stairs, handrails, display shelving and cases, and niche and accent lighting. Choose from frosted UV resistant/flame retardant lens and 10° clear focusing lens, both made of high quality polycarbonate material. Use End Caps made of durable polypropylene to finish the look. Standard assembly listed offers IP20 protection; Use a neutral cure silicone sealant at each end and along each side of lens for IP65 rating. *Mounting suggestions: Secure using E-CLIP Mounting bracket, construction adhesive, or 3M® double-sided adhesive tape. See pages 28-31 for installation tips and suggestions.*



PE-AA2-1M

39.4" length, Anodized Aluminum Extrusion

PE-UVLENS-1M

Frosted PC* UV Lens (shown in extrusion)

PE-AA2-END

1/16" White PP* End Cap

E-CLIP

Zinc Mounting Bracket

PE-FOCLENS-1M

Clear PC* Focusing Lens (shown in extrusion)

Lenses and Caps Sold Separately
Each end cap adds 1/16" to overall finished length

*PC = Polycarbonate

*PP = Polypropylene