

# POLAR 2 MINI NEON



A great replacement for conventional neon. This Mini Neon has the same robust construction as Polar 2 Neon, but with higher impact due to the thin lens design. Available in 120V with eight color choices.

## Performance

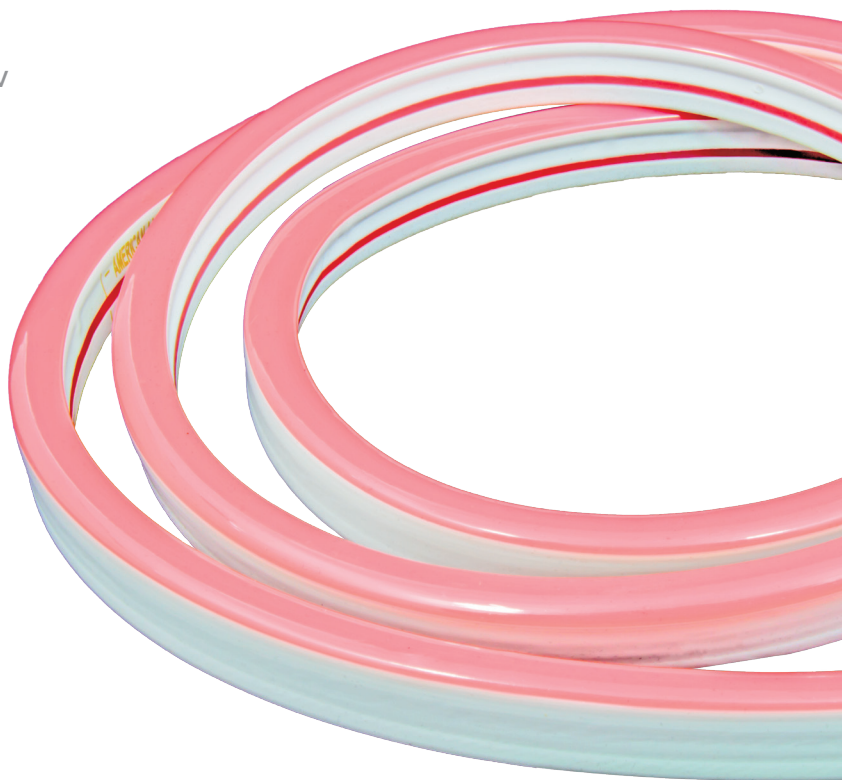
- 1/3" LED spacing and opaque jacket provide uniform appearance for direct view applications
- 3528 SMD LEDs emit up to 90 lumens per foot
- Dimmable with most standard, low voltage magnetic and low voltage electronic dimmers\* (minimum loads may apply)
- Suitable for indoor and outdoor use, 120V 150ft reels are c/ETL/us Listed unless cut

## Construction

- Reels have attached power connection and end cap on dead end; four additional MINI-P2-NF-CONKIT-8A kits are included with each 120V reel
- Flexible rubber housing with frosted or colored PVC lens are protected with UV inhibitor

## Installation

- Use clips to hold in place for most indirect view installations
- Aluminum mounting channel should be used for direct view installations and when mounting to the underside of a shelf or ledge to prevent sagging



## Specifications

Series	MINI-P2-NF
Input voltage	120V AC
Colors	WW/WH/AY/BL/GR/OR/PI/RE
CRI or nm	See individual product
Wattage	2.4W/ft
Lumens	See individual product
Reel length	150 feet
Maximum run	150 feet
Cuttability	18"
Beam angle	120°
Dimming	10-100% with most dimmers*
Material	Opaque PVC jacket, white PVC back
Rating	c/ETL/us Listed for wet locations**
Dimensions	7/16"W x 3/4"H
Switching	Wall control
Mounting	Clips and/or mounting channel
Linking	See linking cables
LED type	3528 SMD LEDs (36 per foot)
Rated life	30,000 hrs

\*Per the NEC, switched wall outlets cannot be used with wall dimmers

\*\*c/ETL/us Listing is void if product is cut.

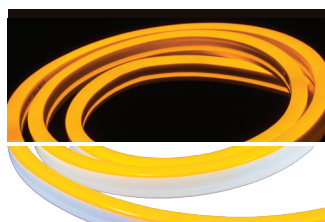
## Polar 2 Mini Neon



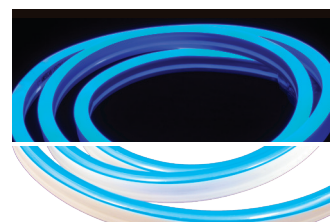
**MINI-P2-NF-WW** (120V)  
Warm White LEDs • 79CRI  
Opaque white jacket  
2700K • 63Lm/ft



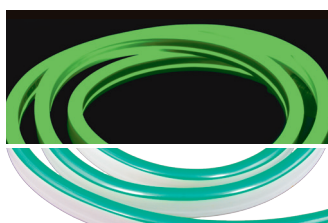
**MINI-P2-NF-WH** (120V)  
Bright White LEDs • 78CRI  
Opaque white jacket  
5000K • 63Lm/ft



**MINI-P2-NF-AY** (120V)  
White LEDs  
Opaque Amber jacket  
590nm • 21Lm/ft



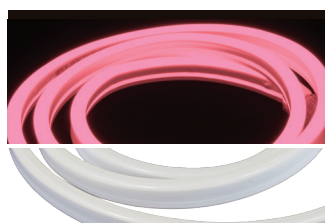
**MINI-P2-NF-BL** (120V)  
Blue LEDs  
Opaque blue jacket  
469nm • 5Lm/ft



**MINI-P2-NF-GR** (120V)  
Green LEDs  
Opaque green jacket  
521nm • 25Lm/ft



**MINI-P2-NF-OR** (120V)  
Orange LEDs  
Opaque amber jacket  
606nm • 12Lm/ft



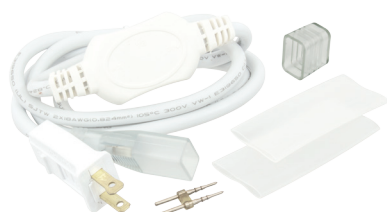
**MINI-P2-NF-PI** (120V)  
Pink LEDs  
Opaque white jacket  
610nm • 17Lm/ft



**MINI-P2-NF-RE** (120V)  
Red LEDs  
Opaque red jacket  
619nm • 5Lm/ft

\*Color photos are for representational purposes and actual color may vary

## Polar 2 Mini Neon Accessories

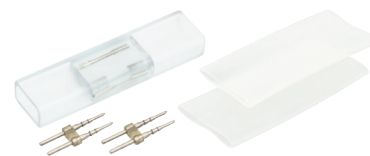


### MINI-P2-NF-CONKIT-8A

120V power connection kit  
Includes: (1) 120V AC 5ft power cord with 8A inverter, (1) power pin, (1) end cap and (2) 4" sections of shrink tube

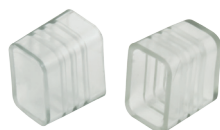


**MINI-P2-NF-JUMP.5** 6" cable  
**MINI-P2-NF-JUMP3** 3ft cable  
**MINI-P2-NF-JUMP10** 10ft cable  
**MINI-P2-NF-JUMP20** 20ft cable  
Jumper (linking) cable  
Includes: (2) power pins and (2) 4" sections of shrink tube



### MINI-P2-NF-INV5

Invisible splice kit  
Includes: (1) power pin and (2) 4" sections of shrink tube (Qty of 10)



### MINI-P2-NF-ENDS

Clear plastic end caps  
(Qty of 10)



### MINI-P2-NF-CLIPS

2" aluminum mounting clips  
with (2) mounting screws  
(Qty of 10)



### MINI-P2-NF-CHAN-3

3ft aluminum mounting track  
1/2"W x 5/8"H