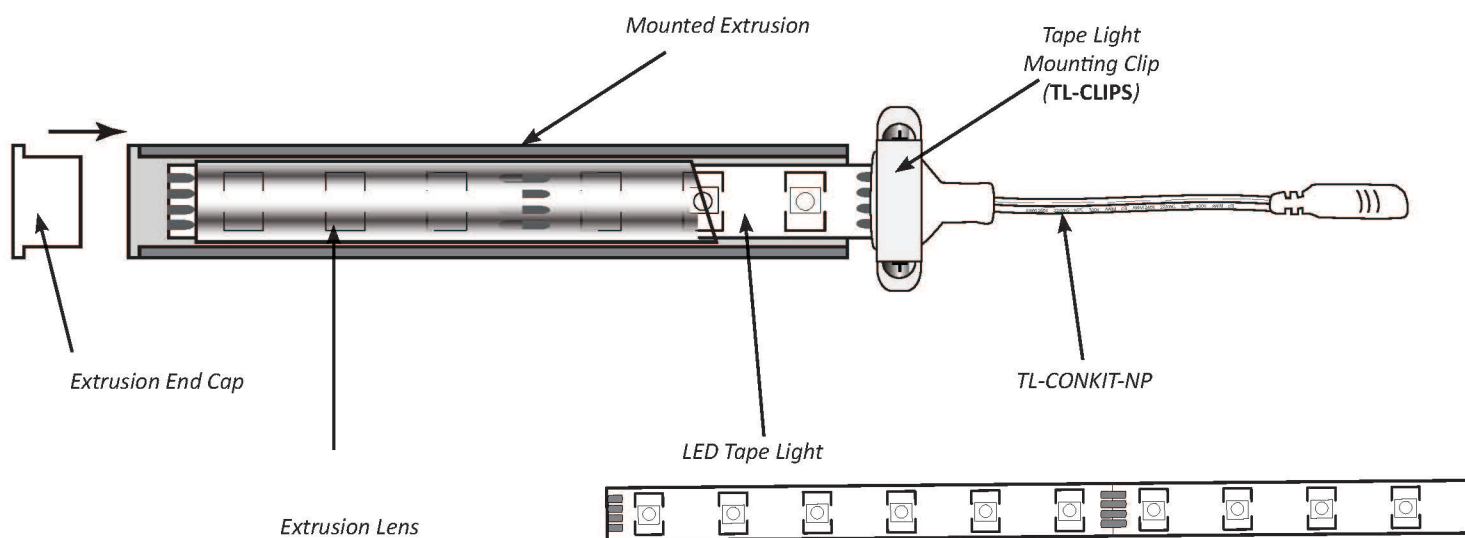


Extrusions

Fixtures by design

Extrusions for tape light allow you to house, protect, and align your LED tape light exactly how and where you want it. A strong aluminum construction in a variety of profiles provides a direct shield that dissipates heat and provides versatility for all applications such as kitchens, foyers, garden accents, curio cabinets, as well as in between stone driveway pavers and grout-lines in bathrooms.

- Available in both surface or recessed mount styles
- IP20 capability with standard installation and IP65 capability when all connections, lenses, and end caps are properly sealed with a neutral cure silicone (excludes Turbo extrusion)

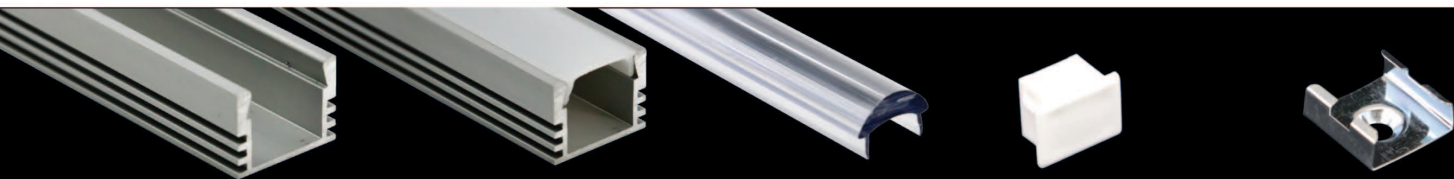




Universal Extrusion

Surface or Recessed Mount • IP65 Capable

The rectangular profile of the Universal Extrusion requires a 5/8" wide channel at 1/2" depth for recessed applications such as stairs, handrails, display shelving and cases, and niche and accent lighting. Choose from frosted UV resistant/flame retardant lens and 10° clear focusing lens, both made of high quality polycarbonate material. Use End Caps made of durable polypropylene to finish the look. Standard assembly listed offers IP20 protection; Use a neutral cure silicone sealant at each end and along each side of lens for IP65 rating. *Mounting suggestions: Secure using E-CLIP Mounting bracket, construction adhesive, or 3M® double-sided adhesive tape. See pages 28-31 for installation tips and suggestions.*



PE-AA2-1M

39.4" length, Anodized
Aluminum Extrusion

PE-UVLENS-1M

Frosted PC* UV Lens
(shown in extrusion)

PE-AA2-END

1/16" White PP* End Cap

E-CLIP

Zinc Mounting
Bracket

PE-FOCLENS-1M

Clear PC* Focusing Lens
(shown in extrusion)

*PC = Polycarbonate

*PP = Polypropylene

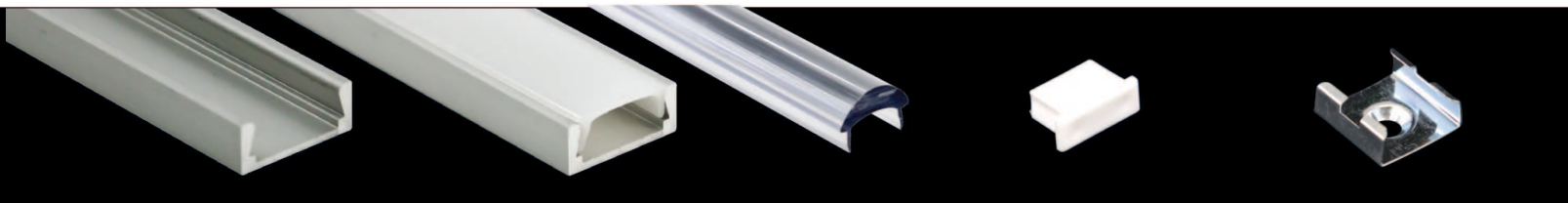
Lenses and Caps Sold Separately
Each end cap adds 1/16" to
overall finished length



Universal Mini Extrusion

Surface or Recessed Mount • IP65 Capable

The low profile Universal Mini Extrusion requires a 5/8" wide channel and only 1/4" depth for recessed applications such as stairs, handrails, display shelving and cases, and niche and accent lighting. Choose from frosted UV resistant/flame retardant lens and 10° clear focusing lens, both made of high quality polycarbonate material. Use End Caps made of durable polypropylene to finish the look. Standard assembly listed offers IP20 protection; Use a neutral cure silicone sealant at each end and along each side of lens for IP65 rating. Not compatible with Flexform tape light when using covered lens. *Mounting suggestions: Secure using **E-CLIP** Mounting bracket or 3M® double-sided adhesive tape. See pages 28-31 for installation tips and suggestions.*



PE-AA1-1M

39.4" length, Anodized
Aluminum Extrusion

PE-UVLENS-1M

Frosted PC* UV Lens
(shown in extrusion)

PE-AA1-END

1/16" White PP* End Cap

E-CLIP

Zinc Mounting
Bracket

PE-FOCLENS-1M

Clear PC* Focusing Lens
(shown without extrusion)

*PC = Polycarbonate

*PP = Polypropylene

Lenses and Caps Sold Separately
Each end cap adds 1/16" to
overall finished length

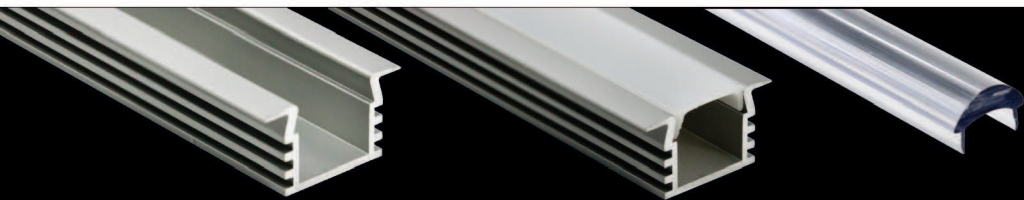
**Universal Mini not compatible with Flexform Tape Light when using a lens; see page 28*



Double Flange Extrusion

Recessed Mount • IP65 Capable

The Double Flange Extrusion hides edges with 1/8" flanges on both sides. The straight sides require a 5/8" wide channel at 1/2" depth for recessed applications such as cabinets, stairs, display cases, and niche and accent lighting. Choose from frosted UV resistant/flame retardant lens and 10° clear focusing lens, both made of high quality polycarbonate material. Use End Caps made of durable polypropylene to finish the look. Standard assembly listed offers IP20 protection; Use a neutral cure silicone sealant at each end and along each side of lens for IP65 rating. *Mounting suggestions: Secure using a construction adhesive or 3M® double-sided adhesive tape. See pages 28-31 for installation tips and suggestions.*



PE-AA2DF-1M

39.4" length, Anodized
Aluminum Extrusion

PE-UVLENS-1M

Frosted PC* UV Lens
(shown in extrusion)

PE-AA2DF-END

7/16" White PP* End Cap

PE-FOCLENS-1M

Clear PC* Focusing Lens
(shown in extrusion)

*PC = Polycarbonate

*PP = Poly propylene

Lenses and Caps Sold Separately
Each end cap adds 7/16" to
overall finished length



Mini Double Flange Extrusion

Recessed Mount • IP65 Capable

The Mini Extrusion hides edges with 1/8" flanges on both sides. The straight sides require a 5/8" wide channel at only 1/4" depth for recessed applications such as cabinets, stairs, display cases, and niche and accent lighting. Choose from frosted UV resistant/flame retardant lens and 10° clear focusing lens, both made of high quality polycarbonate material. Use End Caps made of durable polypropylene to finish the look. Standard assembly listed offers IP20 protection; Use a neutral cure silicone sealant at each end and along each side of lens for IP65 rating. Not compatible with Flexform tape light when using covered lens. *Mounting suggestions: Secure using a construction adhesive or 3M® double-sided adhesive tape. See pages 28-31 for installation tips and suggestions.*



PE-AA1DF-1M

39.4" length, Anodized
Aluminum Extrusion

Lenses and Caps Sold Separately
Each end cap adds 7/16" to
overall finished length

PE-UVLENS-1M

Frosted PC* UV Lens
(shown in extrusion)

PE-FOCLENS-1M

Clear PC* Focusing Lens
(shown without extrusion)

*PC = Polycarbonate

PE-AA1DF-END

7/16" White PP* End Cap

*PP = Poly propylene

**Mini Double Flange not compatible with Flexform Tape Light when using a lens; see page 28*

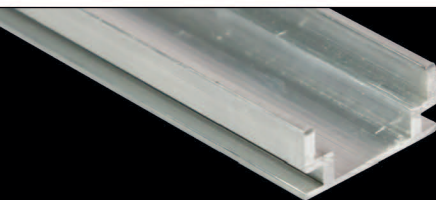


Helm Extrusion

Recessed Mount • IP65 Capable

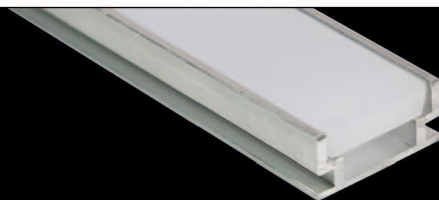
The Helm Extrusion is designed for outdoor applications, such as building facades, terraces, and path markings; and for tile floors. Designed to withstand standard loads with a frosted polycarbonate lens for UV protection. Lens does not clip/slide in like other extrusions and must be secured using a silicone sealant. Use End Caps made of durable polypropylene to finish the look. Standard assembly listed offers IP20 protection; Use a neutral cure silicone sealant at each end and along each side of lens for IP65 rating. For use in environments where wet surfaces would exist, such as bathrooms and pool areas.

Mounting suggestions: Secure using a construction adhesive or ceramic glue. See pages 28-31 for installation tips and suggestions. (For in-ground installation or for areas with exposure to moisture or heavy loads, special order products may be needed such as polystyrene foam board, sealants, or adhesives; please consult a professional installer.)



PE-HELM-1M

39.4" length
Aluminum Extrusion



PE-HELM-1M

Frosted PC* UV Paver Lens (shown
in extrusion)



PE-HELM-END

7/16" White PP* End Cap

Lenses and Caps Sold Separately
Each end cap adds 7/16" to
overall finished length

*PC = Polycarbonate

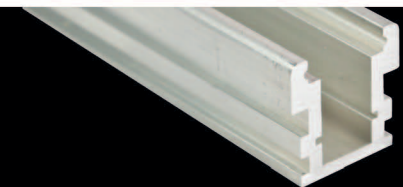
*PP = Poly propylene



Paver Extrusion

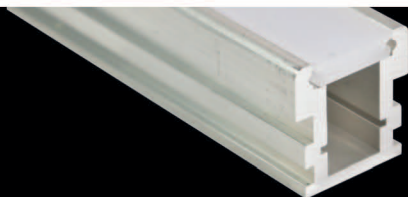
Recessed Mount • IP65 Capable

The Paver premium extrusion is durable and sturdy, resistant to static loads up to 4,000 pounds when installed over a polystyrene base foam board and professionally sealed. The best suited applications are outdoor sidewalks, driveways, parking lots, building facades, terraces and patios. Frosted polycarbonate lens does not clip/slide in like other extrusions and must be secured using a silicone sealant. Use End Caps made of durable polypropylene to finish the look. Standard assembly listed offers IP20 protection; Use a neutral cure silicone sealant at each end and along each side of lens for IP65 rating. **Mounting suggestions:** *Secure using a construction adhesive, frost resistant/elastic ceramic glue, or cement over a polystyrene base foam board. See pages 28-31 for installation tips and suggestions. (For in-ground installation or for areas with exposure to moisture or heavy loads, special order products may be needed such as polystyrene foam board, sealants, or adhesives; please consult a professional installer.)*



PE-PAVER-1M

39.4" length
Aluminum Extrusion



PE-PAVERLENS-1M

Frosted PC* UV Helm Lens
(shown in extrusion)



PE-PAVER-END

1/16" White PP* End Cap

Lenses and Caps Sold Separately
Each end cap adds 1/16" to
overall finished length

*PC = Polycarbonate

*PP = Poly propylene