

Illuminator Specification

Sirius Decorative Illuminator

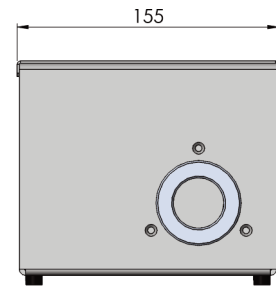
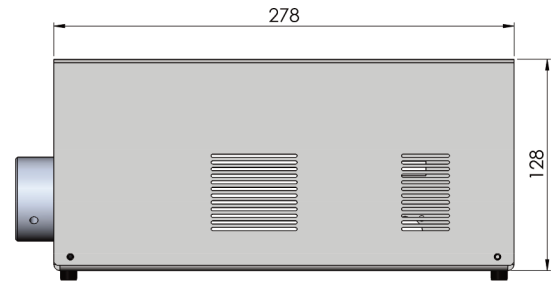
A very powerful, yet efficient fiber optic illuminator, powered by LED technology.

Extremely high power output makes this illuminator suitable for multiple lighting tasks where traditionally metal halide units have been employed. Almost silent in operation, the Sirius outputs light which is similar to a 150W metal halide lamp*.

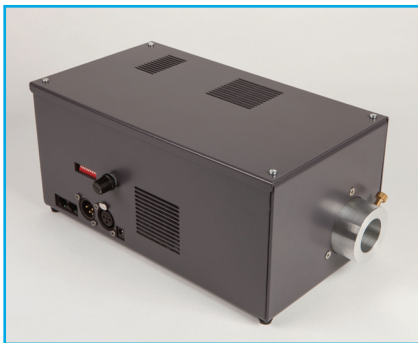
The Sirius Decorative has an inbuilt manual dimmer and dimming is also controllable via either DMX or 0-10V.

A choice of either a 6 color colorwheel or a twinkle effect wheel can also be installed, and this offers the same control options as the dimming effects; manual, 0-10V or DMX.

With a standard 30mm fiber port connector, this illuminator is equally suited to new projects or for retro-fitting to existing fiber optic installations.



Dimensions in mm



Description						
Port connector size	30mm diameter					
Fiber type	Glass/PMMA					
Supply voltage	100-240 VAC 47-63 Hz					
PSU output	24V DC 3.5A					
Power cord	External 24VDC PSU					
Motor	Rotalink 25C13/YSOLPSL3E - 12V - 60:1					
LED power	Up to 90W					
Typical Lamp CRI	75 CRI	88 CRI	82 CRI	83 CRI	98CRI**	98CRI**
2700KLamp color temperature	5500K	5300K	4000K	3000K	3000K	2700K
Typical LED output (lumens)	5700lm	4650lm	5300lm	4650lm	3450lm	2450lm
Lamp life	50,000 hours					
Min. ambient temperature	-10°C					
Max. ambient temperature	45°C					
Operating environment	Indoor / dry					
Dimming	Manual pot / DMX / 0-10V (receiving only)					
Effect Options	6 color wheel or twinkle wheel, controlled either manually, or by 0-10V or DMX					
Material	Aluminum					
Color	Grey					
Size (L x W x H)	278mm x 155mm x 128 mm (10.95" x 6.1" x 5.04")					

* Actual light output varies depending on color temperature specified.

** These specifications are special order only.

