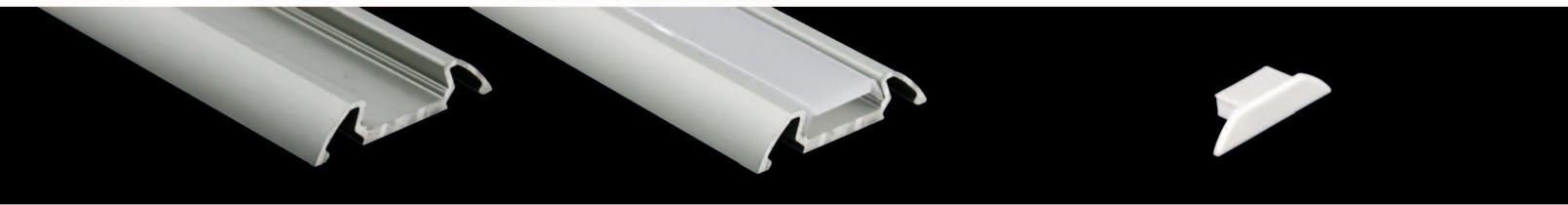




Single Stant Extrusion

Surface Mount • IP65 Capable

The Single Stant Extrusion requires a 1-3/16" width and 1/4" height for installation. The sloped shoulders arch to the mounting surface on both sides, offering a strong presence with a tailored look. Use for applications such as accent lighting, display shelving and cases, as well as niche or exterior lighting. The frosted polycarbonate lens is flame retardant and provides UV protection. Use End Caps made of durable polypropylene to finish the look. Use a small bit to drill a power lead hole where required. Standard assembly listed offers IP20 protection; Use a neutral cure silicone sealant at each end and along each side of lens for IP65 rating. *Mounting suggestions: Secure using construction adhesive, 3M® double-sided adhesive tape, or slide or clip onto #4 sheet metal screws set 26.5mm apart (screw head 4-5mm Ø). See pages 28-31 for installation tips and suggestions.*



PE-SSTANT-1M

39.4" length, Anodized
Aluminum Extrusion

PE-UVSTANT-1M

Frosted PC* UV Lens
(shown in extrusion)

PE-SSTANT-END

1/16" White PP* End Cap

Lenses and Caps Sold Separately
Each end cap adds 1/16" to
overall finished length

*PC = Polycarbonate

*PP = Polypropylene